

FLEET
SHEET

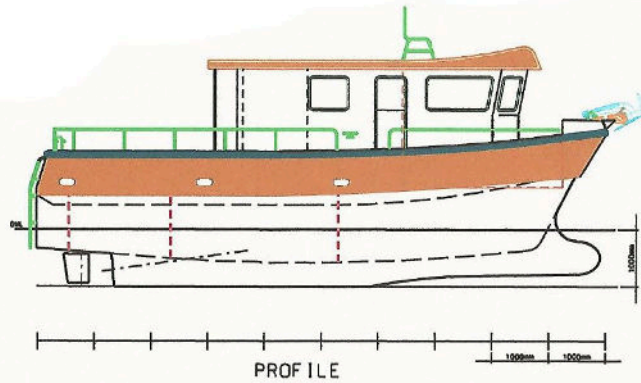


SPECIFICATION

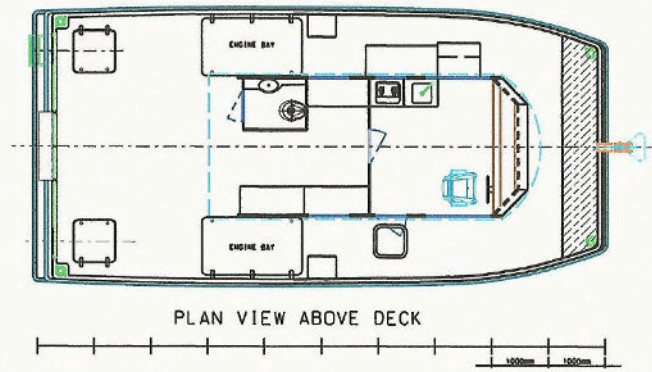
Meerkat

Crew- and IP Transfer / Watertaxi / Anchorage Supply / Diving Support

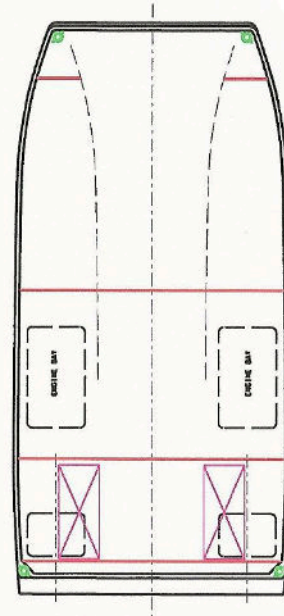
Built	2006 Blyth WorkCats Ltd.	Crew	1
Flag	Denmark - Svenborg	Vessel max. speed	21 knots
Classification	DMA - Danish Maritime Authority	Service speed	-
Call Sign	OX3028	Engines	2x John Deere
IMO No.	-	Total power	336 kW
MMSI	219023135	Construction	GFK
Length Overall	9,93m	Propulsion	Twin Screw Catamaran
Beam	4,80m	Displacement	8,5 tonnes
Draft	1,00m	Paxe Capacity	12
Fuel	680 ltrs.	VHF	1x Sailor RT2048 1x iCOM IC-M421
Cargo Deck Aft	14m ²	GPS	KODEN KGP-913
		RADAR	KODEN
		Autopilot	SIMRAD
		SART	Tron AIS-SART
		EPIRB	TRON60S



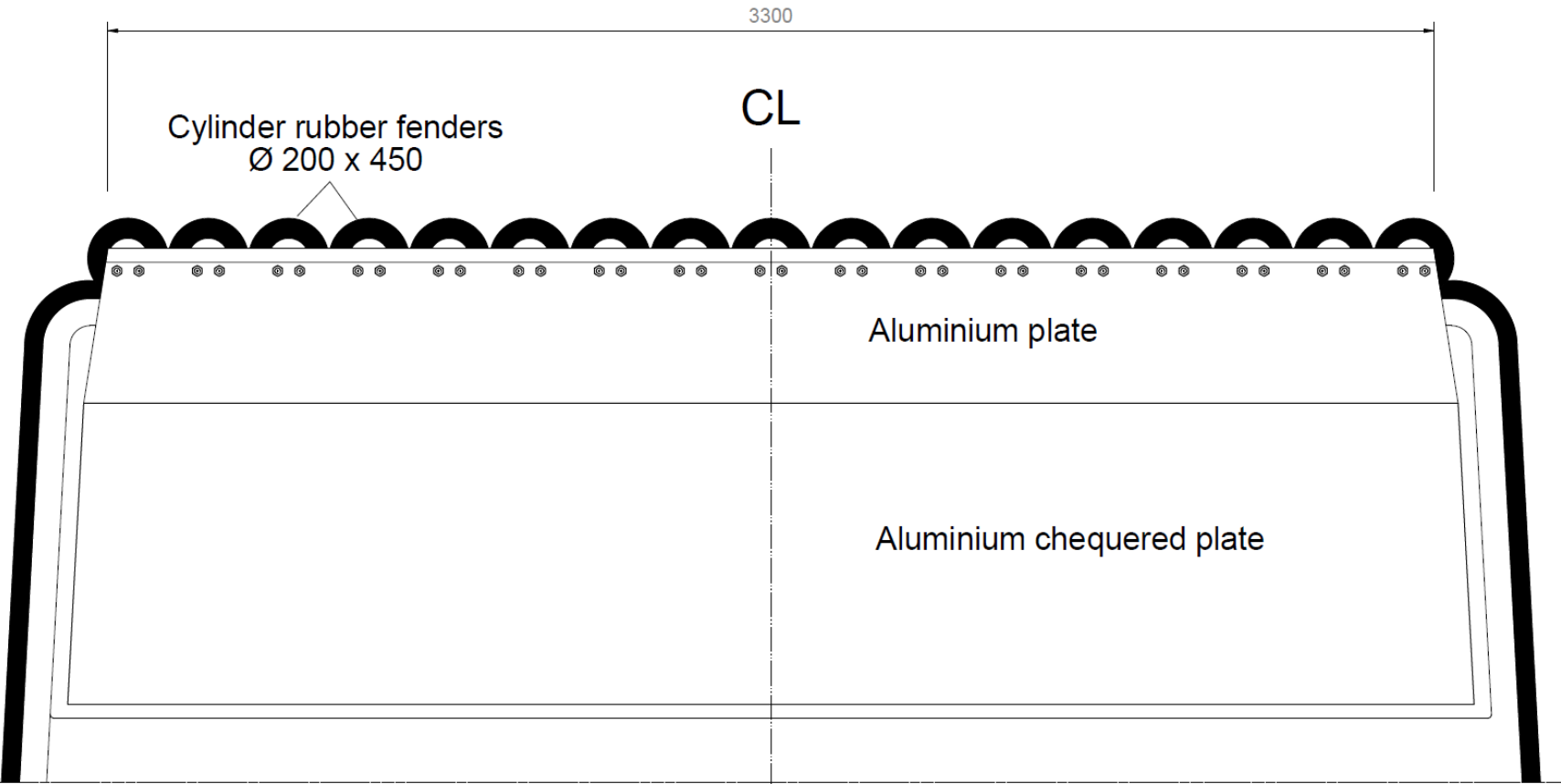
PROFILE




PLAN VIEW ABOVE DECK



CTV MEERKAT Bow Area Fenders



1408/002		10		Construction of Bow Area Fenders	
Author	Construction				
 Schleusenstraße 22A 26382 Wilhelmshaven Germany Tel: +49(0)4421/1545-0 Fax: +49(0)4421/1545-10		Owner			
		Vessel: CTV MEERKAT			
Detail: Bow Area Fenders				Date: 11.10	
Drawn	1408/03	A. Jäger	Checked	2014/03	
Checked	1408/03	T. Eickmann	Client ID		
Approved			File	1408/002/Bow Area Fenders.dwg	